

exposure

for complete calendar listings
see www.ceramicsmonthly.org



1 Craig Clifford's *Conjoined*, slip-cast and handbuilt earthenware. "Containment," at The Clay Studio of Missoula (www.theclaystudioofmissoula.org) in Missoula, Montana, October 2–30.
2 Kanjiro Moriyama's *Kai (Turn)*, 18 in. (37 cm) in height, wheel-thrown stoneware, glaze, 2015.
3 Masaru Nakada's *Sen (Line)*, up to 17 in. (44 cm) in height, wheel-thrown porcelain, inlaid glaze, 2014. "Japan!" at Galerie Mouvements Modernes (www.mouvementsmodernes.com) in Paris, France, October 2–31.



2



3

4 Kyung Won Baek's *Ellipse 07*, 29 in. (74 cm) in length, handbuilt porcelain, wood and soda fired, 2014. 5 Sun Mi Kim's *Come as the light*, 13 in. (33 cm) in height, ceramic, china paint. 6 Yoojoo Kim's *Untitled*, 14 in. (36 cm) in length, slip-cast white clay, drawing with water-soluble colorant. 7 Dong Hee Suh's *A Ladder in the Dream* (*Genesis 28*), 32 in. (81 cm) in height, ceramic, glaze, fired to cone 04, 2015. "Hanwool Artists Association 2015 Exhibition," at Art and Culture Service Center in Jeju City, Jeju Island, South Korea, October 13–18.



4



5



6



7

exposure



1



2

1 Kim Joon's *Blue Jean Blues-Easy Rider* (detail), 6 ft. 10 in. (2.1 m) in length, 2012. 2 Katsuyo Aoki's *Trolldom*, 6 ft. (1.8 m) in height, porcelain, 2015. Photo: Marco Suemasa. "My Blue China," at Bernardaud Foundation (www.bernardaud.fr) in Limoges, France, through November 21. 3 Monika Patuszynska's *Bastards Series* up to 13 in. (33 cm) in height, Parian ware, electric fired to 2300°F (1260°C), 2012–13. Silke Decker's *Stars Network*, ceramic, 2014. 4. "European Craft Summit," at Anciens Abattoirs (www.mons2015.eu/en/world-crafts-council) in Mons, Belgium, October 20, 2015–January 10, 2016.



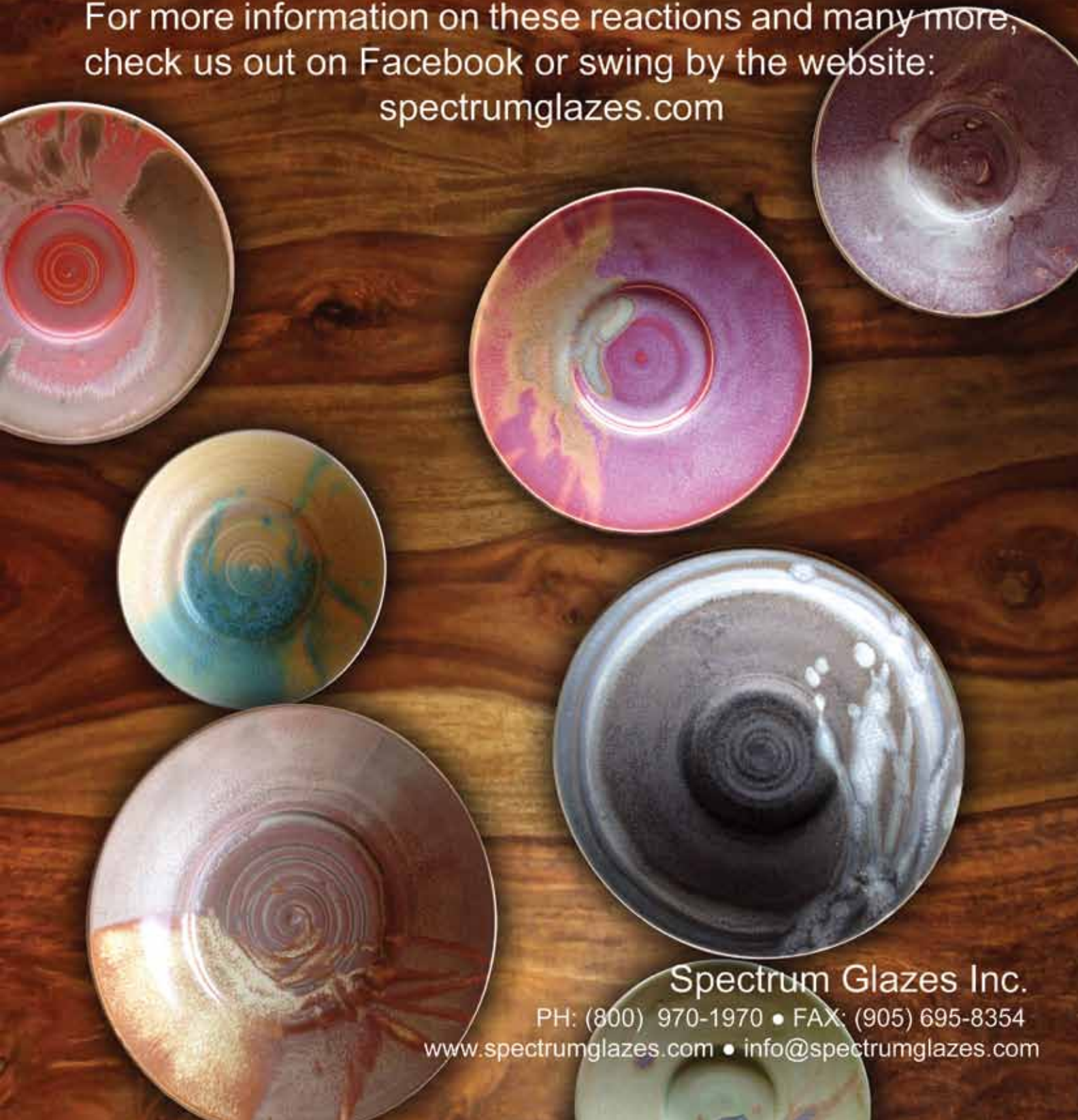
3



4

Spectrum Glazes

These plates are just a few of the layering combinations possible with Spectrum's twelve new Shino glazes. For more information on these reactions and many more, check us out on Facebook or swing by the website:
spectrumglazes.com

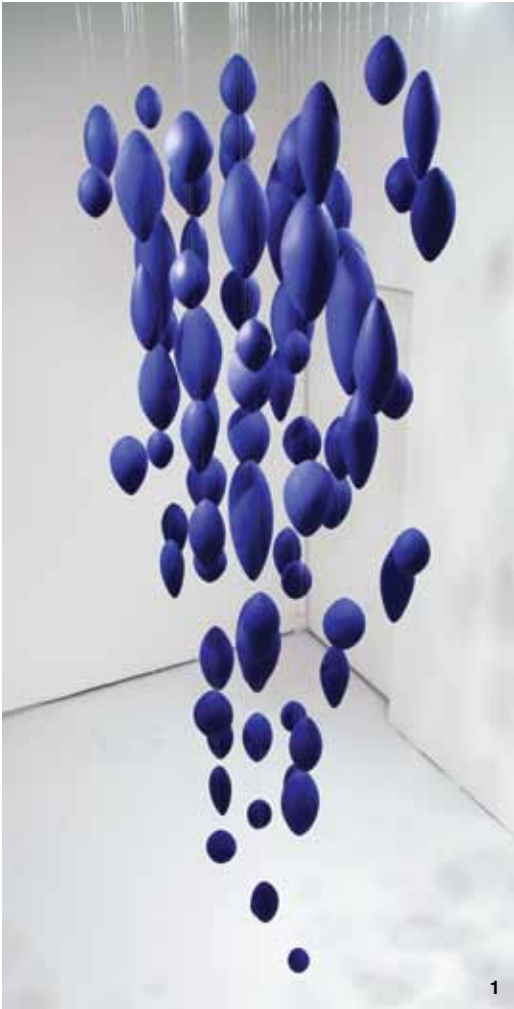


Spectrum Glazes Inc.

PH: (800) 970-1970 • FAX: (905) 695-8354

www.spectrumglazes.com • info@spectrumglazes.com

exposure



1



2

1 Helena Starcevic's *Falling Blue*, 6 ft. (1.8 m) in height, ceramic. "Helena Starcevic," at Five Points Gallery (www.fivepointsgallery.org) in Torrington, Connecticut, October 22–November 21. 2 Barnaby Barford's *The Tower of Babel*, bone china, ceramic transfers. "Barnaby Barford: The Tower of Babel," at Victoria and Albert Museum's South Kensington's Medieval and Renaissance Galleries (www.vam.ac.uk) in London, England, through November 1. 3 Mella Shaw's *Postcard 3*, 23½ in. (60 cm) in height, stoneware, porcelain, 2014. 4 Mella Shaw's *Postcard 1*, 27½ in. (70 cm) in height, stoneware, porcelain, 2014. 5–6 James Rigler's *At Every Fading of the Stars and Ten Columns* (detail), from the installation at Tramware, Glasgow, 2015. "British Ceramics Biennial" at Stoke-on-Trent, England, (www.britishceramicsbiennial.com) through November 8.



3



4



5



6



America's Most Trusted Glazes



PC-39 Umber Float
over C-20 Cobalt

LAYERING Potter's Choice

Celadon
C-20 Cobalt

Explore the possibilities at
LayeringAmacoGlazes.com



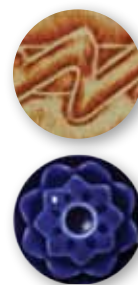
Cone 5/6



PC-4 Palladium over C-20 Cobalt



PC-21 Arctic Blue over C-20 Cobalt



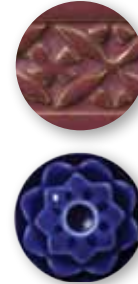
PC-32 Albany Slip Brown over C-20 Cobalt



PC-43 Toasted Sage over C-20 Cobalt



PC-46 Lustrous Jade over C-20 Cobalt



PC-55 Chun Plum over C-20 Cobalt

These examples have been fired to Cone 6.

exposure



1



2

1 Zsuzsa Füzesi Heierli's *Double 3*, 21 in. (53 cm) in height, porcelain, 2014. Photo: Bálint Rádóczy. "Luxury, Peace, and Pleasure—Swiss Ceramics," at Musées de la Ville de Genève (<http://institutions.ville-geneve.ch/fr/ariana>) in Geneva, Switzerland, through November 1. 2 Roberto Lugo's *We Are All Kings*, 21 in. (53 cm) in height, porcelain, china paint, luster, 2014. "Ghetto Garniture: Wu Tang Worcester," at Ferrin Contemporary (www.ferrincontemporary.com) in North Adams, Massachusetts, through October 12. 3 Greater Nicoya tripod vessel in the form of an agouti, pottery, clay slip, paint, Nicoya, Guanacaste Province, Costa Rica, CE 1000–1350. Photo: Ernest Amoroso. "Cerámica de Los Ancestros: Central America's Past Revealed," at the National Museum of the American Indian (www.americanindian.si.edu) in New York, New York, through February 29, 2016. 4 Lauren Gallaspy's *Vanishing Point*, 10 in. (25 cm) in height, porcelain. 5 Kirsten Stingle's *Nibble*, 35 in. (88 cm) in height, handbuilt porcelain and stoneware, underglazes, slips, stain, mixed media. "Taboo: Sexuality and Sexual Identity in Ceramics," at Signature Contemporary Craft (www.thesignatureshop.com), in Atlanta, Georgia, through October 31.



3



4



5